

# 220 ALHAMBRA

## THIRD FLOOR

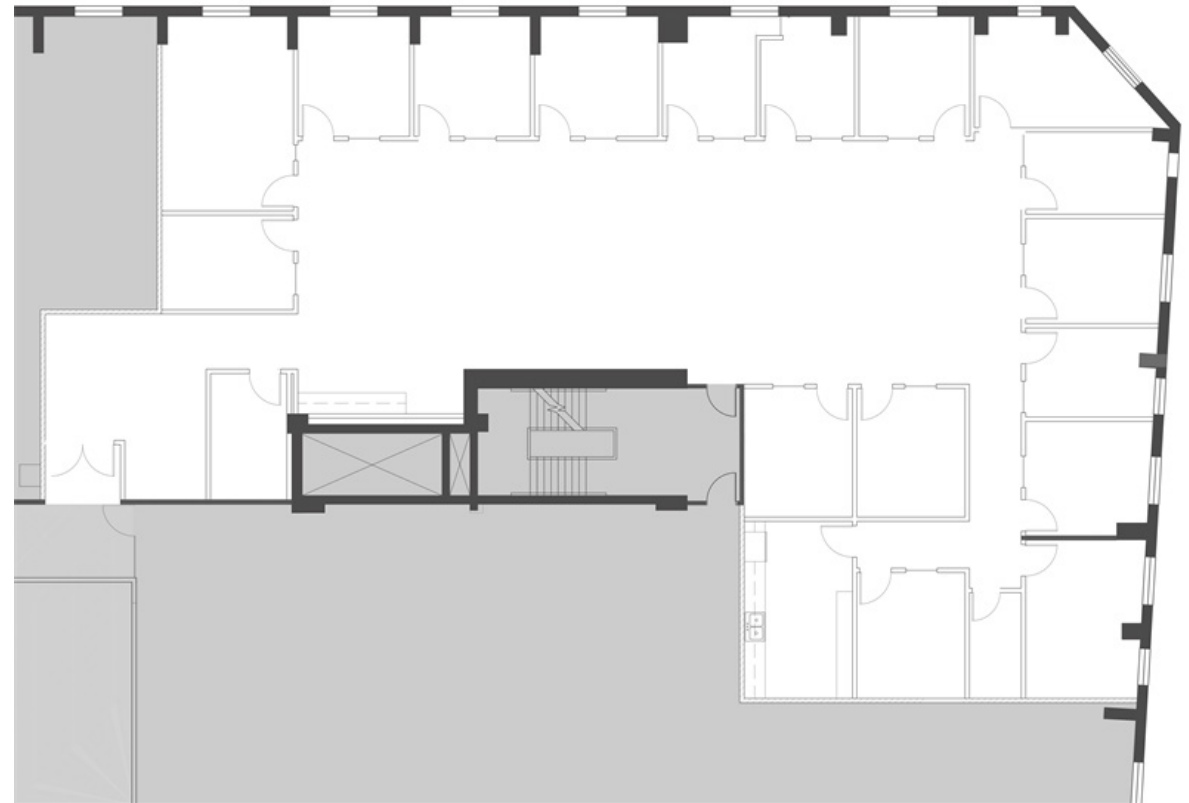
Suite 310  
6,885 SF

---

### PLEASE CONTACT:

**Gordon Messinger**

Executive Vice President  
+1 305 381 6441  
gordon.messinger@cbre.com



© 2020 CBRE, Inc. All rights reserved. This information has been obtained from sources believed reliable, but has not been verified for accuracy or completeness. You should conduct a careful, independent investigation of the property and verify all information. Any reliance on this information is solely at your own risk. CBRE and the CBRE logo are service marks of CBRE, Inc. All other marks displayed on this document are the property of their respective owners, and the use of such logos does not imply any affiliation with or endorsement of CBRE. Photos herein are the property of their respective owners. Use of these images without the express written consent of the owner is prohibited.